



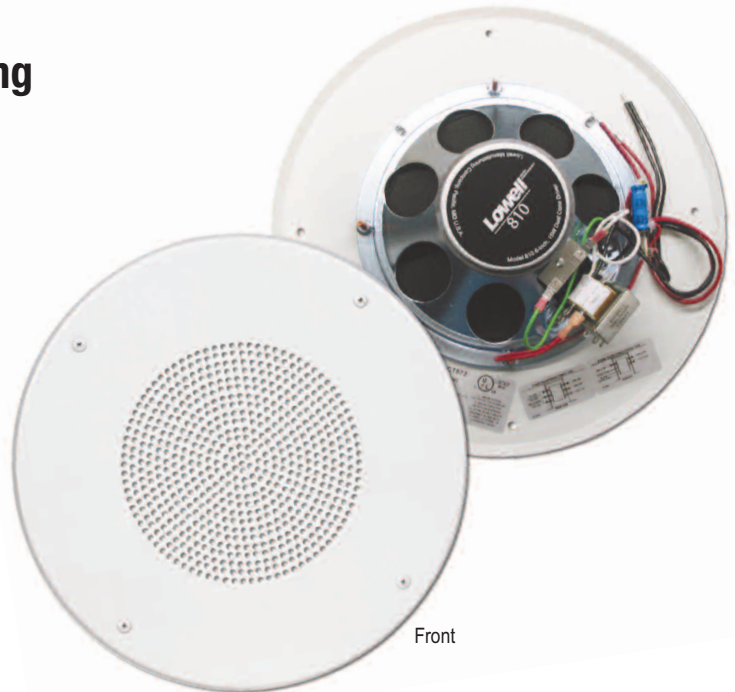
Model No. ULS-WB8-CT572 8" Speaker Assembly

- Includes driver, transformer, grille
- UL Listed for Fire Protective Signaling when used with approved backbox (order separately)

Assembly with 8" single voice coil driver with dual cone is engi-neered to meet UL Standard 1480 (5th ed.) to provide clear signal reproduction for indoor fire alarm/emergency warning systems and general voice communication for other applications. It must be used with compatible control equipment and one of the approved backboxes to maintain UL Listings (see pg. 2, order separately).

Features

- Meets NFPA 72A, UL Standard 1480 5th edition (for fire protec-tive signaling systems), and UL 2043 (for use in plenum spaces) when used with approved backbox (order separately).**
- The 8" 15W single voice coil driver with dual cone
- Factory-mounted 70/25V dual voltage transformer with power tap lugs (1/4, 1/2, 1, 2, 5W), parallel input leads and DC block-ing capacitor meet application requirements for 25V and 70V life safety and emergency signaling systems.
- Reproduces emergency alarm and voice instructions with high efficiency and clear intelligibility.
- Round steel, screw-mount grille (12.875" dia.) with white pow-der epoxy finish.
- Delivers excellent sensitivity per UL's measurement standard of 2W @10ft. This recognized standard assures emergency com-munications can be heard and understood.
- Ships ready for installation to approved backbox (required to maintain UL Listings – order separately).



Front

A&E Specifications

The fire-protective speaker assembly shall be AVLELEC Model No. ULS-WB8-CT572. The speaker shall be 8" with a single voice coil with dual cone. It shall have a factory-mounted dual voltage 70/25V transformer with (1/4, 1/2, 1, 2, 5W) power tap lugs and parallel input leads. The speaker shall have a 15 watt power rating and a sound pressure level of ___ when measured at 2 watts @10 ft. The assembly shall include a DC blocking capacitor and factory mounted round steel grille with 12.875" diameter and white powder epoxy finish.

It shall mount to AVLELEC backbox Model No. _____, which is required to maintain UL Listings (order separately).

Model No. Summary

Model No.	Driver	Transformer	DC Blkg. Capacitor	Grille	Approved Backbox* (not included – order separately)
ULS-WB8-CT572	8" single voice coil	70V / 25V	10 mfd @ 160V	12.875" dia.	CP84 or XCP84-S

* Approved backbox is required to maintain UL Listing.

Driver Specs

Model No.	Size	Type	Ceramic Magnet	Cone Type	V.C. Impedance	V.C. Dia.	Power Rating	Sensitivity 1W / 1M*	Depth w xfmr
ULS Series	8"	Single voice coil	10 oz.	Dual	8 Ohms	1"	15 Watts RMS	95* dB avg	2.75"

*UL dBA rating at 10 ft: 70.7V input 1W: 83.6 dBA, 25V input 1W: 84.1 dBA

Transformer Specs

Voltage	Power Rating	Primary Taps	Secondary Impedance	Core Size	Insertion Loss	DC Blocking Capacitor
70V / 25V	5 watts	1/4, 1/2, 1, 2, 5W	8 Ohms	1/2" x 1/2"	< 1	10 mfd @ 160V

Assembly Specs

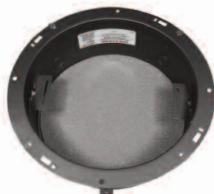
Model No.	Transformer	DC Blkg. Capacitor	Grille	Backbox (not included, order separately)*	UL Tested Response w grille & backbox***	Dispersion with grille 2kHz – 6dB
ULS-WB8-CT572	70V / 25V	10 mfd @ 160V	12.875" diameter	CP84 or XCP84-S	60Hz–12kHz ± 9dB	100 degrees

* Order approved AVLELEC backbox separately (required to maintain UL Listing) *** Actual response exceeds that tested by UL.

Approved Backboxes (required to maintain UL Listings, order separately)



- Model No. CP84**
- Recessed steel backbox with extended lip
 - 11.938" dia.
 - 4.063" deep
 - Black finish
 - Mounts Grille WB-8 that's used in ULS assembly



- Model No. XCP84-S**
- Recessed steel backbox with flat flange and straps
 - 10.063 dia.
 - 4.063 deep
 - Black finish
 - Mounts Grille WB-8 that's used in ULS assembly